

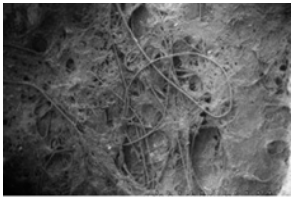
Images of RS1 (Hide-scraping) residues

using S3500N Hitachi VP-SEM

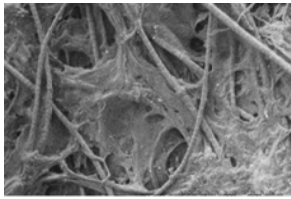
The key to the images is at the beginning of the document.

The images published in this pdf are those that were used in the training portion of the experiment reported in Monnier et al. 2012, *J. Arch. Sci.* For questions, please contact Gilliane Monnier at monni003@umn.edu.

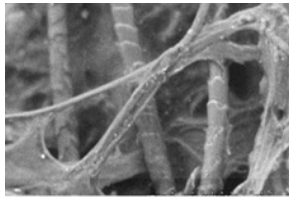
Naming conventions: 'RS' = Residue Study; 'D' = Dorsal side; 'V' = Ventral side; 'a', 'b', etc. = residue label; '25', '50', '115' = magnification used



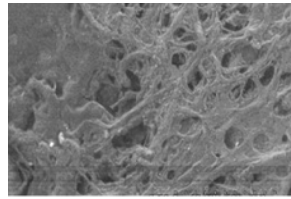
RS1D_a01.TIF



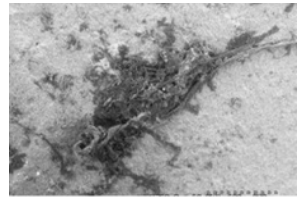
RS1D_a02.TIF



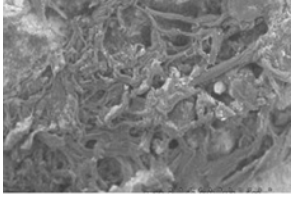
RS1D_a03.TIF



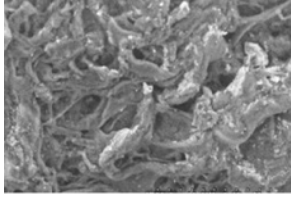
RS1D_a04.TIF



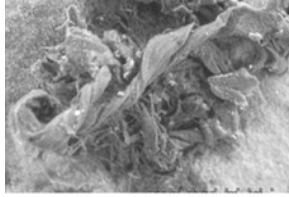
RS1D_f01.TIF



RS1D_f02.TIF



RS1D_f03.TIF



RS1D_f04.TIF

